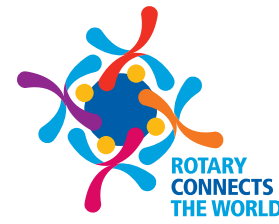


Apr. 2, 2020



Beverly Rotary Club Sprocket Newsletter

THE PARTING GLASS

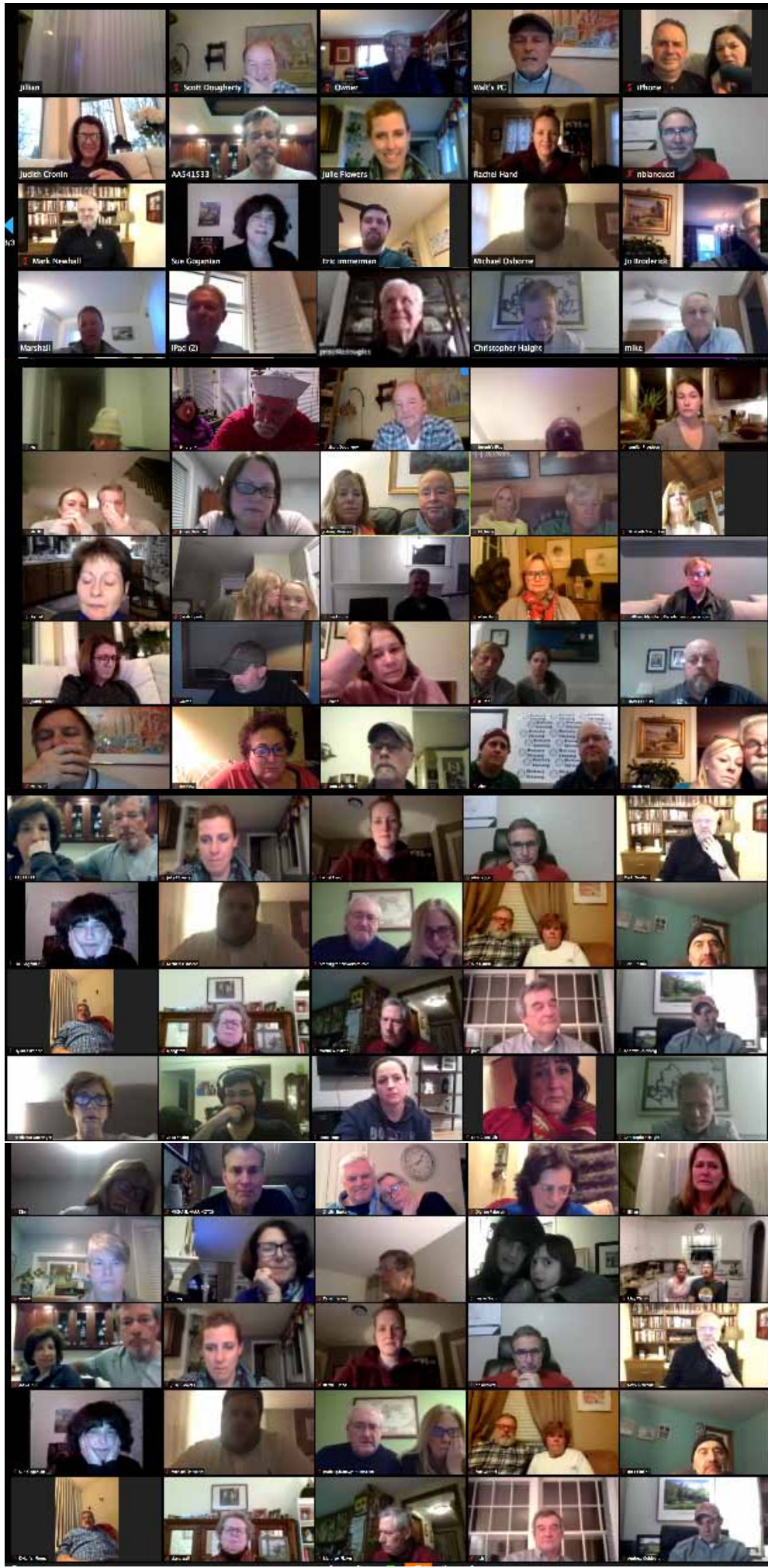
MCJ Insurance Agency, Inc.
 Michael C. Jones
 President
 www.mcjinsuranceagency.com
 Phone 978-338-4670 409A Cabot Street
 Fax 978-522-8388 Beverly, MA 01915
 Mobile 978-828-5822 mike@mcjins.com

TEMKIN
 FINANCIAL GROUP, LLC
 Plan · Protect · Prosper
 Alan L. Temkin
 Senior Financial Planner
 301 Edgewater Place, Suite 200
 Wakefield, MA 01880
 Main 781-876-4175
 Fax 781-876-4199
 atemkin@temkinfinancial.com
 www.linkedin.com/in/alan-temkin-1150676
 www.facebook.com/TemkinFinancialGroup

montserrat College of Art
 where creativity works
 visual art & design education
 continuing education for all ages
 public art galleries
 beverly, ma | www.montserrat.edu


MG The Mega Group
 Commercial Real Estate
BRIAN DAPICE & ASSOCIATES
 BEVERLY 978-922-6400 DANVERS 978-762-9771
 www.TheMegaGroup.net
 Specializing in
 Retail Sales & Leasing, Developable Land
 and Multi-Family Investments

Business banking right here
 where you do business.
BEVERLY BANK
 YOUR COMMUNITY BANK
 MEMBER FDIC MEMBER SIF





Matthew H. Plaker, Jr., CLU, AIF®
 Tel: 978-937-3123
 Email: mplaker@bancassurance.com
 100 Cummings Center, Ste. 2057
 Beverly, MA 01915
 www.captivafinancialadvisors.com



CIFIA
 CAPITAL FINANCIAL ADVISORS

True to our Communities

We are proud to support the Beverly Rotary Club




STERLING
 INSURANCE AGENCY, INC.

Established in 1929 & Still Growing!
 Auto • Home • Business • Health • Life

Richard F. Mooney Jr.
 president

306 Cabot Street, Beverly, MA
 (978) 922-6600

Desjardins
 JEWELERS

978-922-2149

Commodore Plaza,
 47 Enon Street
 Beverly, MA 01915-3601



The leading provider of custom-designed workforce training programs.

NORTH SHORE COMMUNITY COLLEGE
Corporate Training SOLUTIONS
Train your people. Transform your company.

Dianne Palter Gill, Ed.D.
 978-236-1225
 dpalterg@northshore.edu
 corporate.northshore.edu

Last time at the Beverly Rotary Club...

Zoom meeting called to order at 6:30 by President Dave

Prayer - Rev. Julie Flowers
 Song - Dianne & Freddi

Attendees

Count on Zoom said 80+ not including couples etc. Hey pretty good attendance for a Thursday.

Tributes from:

Dave Olson
 Alex Ushakoff
 Mike Harrington
 Derek Maxfield
 Al Temkin
 Jacqui Rap
 Jo/Phil Broderick
 Thad Siemasko
 Matt Blanchard
 Matt Piaker
 Sue Gabriel
 Elizabeth Macomber
 Marshall Handly
 Lauren/Patrick Belmonte
 Ed Cahill
 Jennifer Freedson
 Rachel Williams
 Dylan Jones
 Rick/Joanna Mooney
 Judith Cronin
 Bill Scanlon
 Tom Chatellier
 Heidi/Lex Ushakoff
 Lee Yaffa
 Mark Munoz
 Walt Kozmoski
 Scott Dougherty

Meeting

Although a somber occasion for a meeting, and yes tears were shed but overall laughter and good memories of Don were shared to the club from list above.

All of us have lives outside of Rotary believe it or not, and we were able to look behind the Don Kelley curtain and see what a Wonderful Wiz-

ard he was. Many comments on the chat thread expressed that people found out more today about Don, his humor, his humanity and his embrace of life and the world. Stories were told, laughs were shared and despite not be able to give an Irishman a proper send off in the traditional way, our special club pooled together to support this special person. Some day in the hopefully near future we can all hug, have a drink and cry a little, laugh a lot and give Don a GREAT BIG ROTARY send off as he would have loved.

Some of the topics and comments from tributes include things like:

Sharing Cigars, drinks and friendship as kids trick or treated
 Memorable Italy trip
 Hi-jinks in Provincetown with trannies
 Kenny Rogers look alike in Ireland
 Shoulder to lean on
 Sleeping with the Dolphins
 Organizing a messy life
 2 innings of Red Sox watched, 7 at the bar laughing
 Champion of small businesses
 Force of nature
 Engine of Team Frate Train by not saying no to help
 Personal friend an mega fundraiser
 Making you feel special
 Helping guide through tough times
 Best Man
 1 on 1 or 500 people treated the same
 Poetry Inspiration
 Mother's House frock wearer
 Non Rotary looking to donate in his name to a cause
 Made you feel like a million first time or 10th time you met
 Immediate Welcoming
 Bromance with great humor
 Adventures with Don at Crack of Don
 Stories during your back swing
 Bourbon Crusher with friends
 Countless Nights in various Beverly

...Thursday, Apr. 2, 2020

watering holes
 Ketel One stash with all the fixings at friends
 Friend to Prison inmates
 Oblivious to stranger danger
 Cape Fear weekend
 Brought many into club
 Glue that forms 100+ friendships in club.
 Better Person, for better community
 Void in our life

Jo Broderick spoke of her good friends support over the years in her hard times as well as good. A "brother" to Phil when he had his surgery.

Parting Song

A pact made at some earlier time was to have this song played at their funeral. The 2008 version of The Parting Glass by The High Kings was our tearful send off to Don.

As we all raised a glass to say goodbye to Don and each other for the time being.

Meeting adjourned around 8:10

Submitted by Will E. Quarantine



and you thought we forgot to include Dave's head, HAH!

A poetic remembrance of Don. Composer/ Lee Yaffa. Editor-In-Chief/Catherine Yaffa

The Donald

When did you first meet the Donald...
 At a time of joy, or perhaps of strife?
 No matter, we trust he brought
 a needed smile to your life.

When did you heed his burly advice...
 "My friends, let us proceed, hard as it may be."
 Sincerely the optimist,
 he had visions others might not see.

When did you bid, when he was auctioneer...
 Raising your hand wasn't all that essential.
 No matter, Don squeezed your wallet,
 he saw the potential.

When did you dine; for business, or was it pleasure...
 Always a laugh or two, that was fine.
 But caution was due,
 he always ordered the most expensive wine.

When did you hear...
 "Martinis please, and olives for my associate."
 He'd gladly pay,
 no space to negotiate.

When did you bowl with him...
 Levity, yet acute skill on the alley.
 Pizza and drinks after the pins —
 holy karaoke, he led the rally.

When was your last conversation...
 Was it a chat, phone or text?
 With Don, you always felt
 there would be a next.

When in due time...
 Will your memories gather?
 Assembled in unison,
 or isolation if you'd rather.

When did you realize his years were just borrowed

That his presence just lent?
 We can all now take comfort
 that his life was well spent.




Edward F. Cahill, J.D., CFP®, CLU®, ChFC®
 Financial Adviser
 (978) 927-9352 • 306 Cabot Street, Beverly, MA 01915
 ecahill@ft.newyorklife.com • www.edwardfcachill.com

Agent, New York Life Insurance Company.
 Registered Representative, offering securities through NYLIFE Securities LLC,
 Member FINRA/SIPC, a Licensed Insurance Agency
 201 Jones Road, Fifth Floor, Waltham, MA 02451 • Tel: 781-647-4100
 Eagle Strategies and NYLIFE Securities are New York Life Companies



PROMETHEUS
TUTORS

KNOWLEDGE • SKILLS • REASONING

(978) 922-5540
 www.prometheustutors.com

CCI Reprographics

A Full Service Copy Center
 AV Rentals & Services
Serving Beverly Since 1979
 Alex Ushakoff III - owner
 4th generation Rotarian
 Centennial Rotary President 2004-2005
 Two convenient Beverly offices

110 Cabot Street 107Q Cummings Ctr
 978-922-3773 978-921-1166

SHUKA
 Associates Inc.

Real Estate Appraisal, Appraisal Review & Consulting

John A. Shuka, MAI, SRA, AI-GRS
 8 Enon Street, Suite 1B
 Beverly, MA 01915
 978-921-1700
 www.shuka-associates.com

Wayside
 rentals & leasing

OFFICE & STORAGE TRAILERS
STORAGE CONTAINERS

Moving • Leasing • Rentals • Sales

800.786.3313
 www.waysidetrailers.com